

User manual

2998510000

SmartSteer Classic 5

February 2023



Contents**Page**

1. Introduction	3
2. Installation	4
3. Operating secondary functions	5
4. Maintenance	9
5. Warranty	10
6. Location of fuses / control unit	11
7. Contact information installer	11

Declaration of Conformity

Bever Car Products b.v. declares that this product meets the requirements as set in the directive 2014/53/EU. Visit our website for the full declaration: <https://www.bevercarproducts.nl/en/compliance/>




Transmission frequency: 2.410 GHz – 2.455 GHz
Transmission power: 0 dBm (1 mW)

Manufacturer:

Bever Car Products b.v.

 Industrieweg 30
6673 DE Andelst
The Netherlands

 +31 (0)488-451524

 info@bevercarproducts.nl

 www.bevercarproducts.nl

6. Location of fuses / control unit

In case of a breakdown it can be useful to inform roadside assistance on the location of the fuses and the SmartControl 2 control unit. The installer can provide this information here:

Part: **Location:**

Control unit:

Fuse (5A):

7. Contact information installer

Company name:

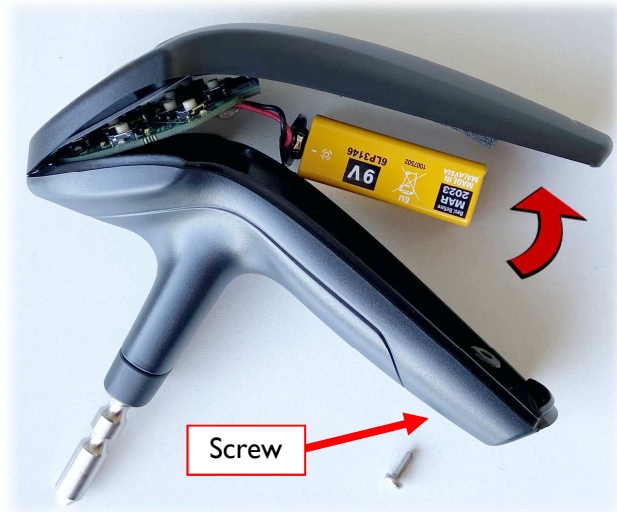
Address:

City:

Telephone:

Dealer stamp

The battery can be replaced by removing the screw from the bottom and rotating the top cover away from the bottom part.



5. Warranty

The warranty is limited to two years. This covers the cost of parts. Not covered are the battery, labour and transportation costs.

1. Introduction

Thank you for choosing SmartSteer by Bever Car Products. SmartSteer is a steering aid as well as a remote control for operating several secondary functions in your vehicle.

We trust that the ergonomic design and robust build quality will offer you many years of comfortable driving and reliable operation of your vehicles secondary functions.

SmartSteer should be installed by a Bever Car Products accredited installer.

You may be required to inform your insurance company that your vehicle is equipped with one or more adaptations.

SmartSteer always operates together with 'SmartControl 2'. That's an interface between your SmartSteer and the OEM electronics in your vehicle. SmartSteer communicates with SmartControl 2 by means of radio signals.

SmartSteer is equipped with standard settings. In consultation with your installer, the behaviour and functions of the SmartSteer buttons can be changed. In some cases, the technology in the vehicle dictates a certain configuration.

The complete system consists of:

- SmartSteer (steering knob) including battery
- Spacer
- Steering wheel clamp
- RF receiver
- SmartControl 2
- User manual

2. Installation

The steering wheel clamp is permanently fixed on the steering wheel. However, SmartSteer can be removed from the clamp. SmartSteer can be mounted on the steering wheel clamp by inserting the metal pin into the hole in the clamp. Button A has to be pressed while doing this. The metal pin has to disappear into the clamp completely.

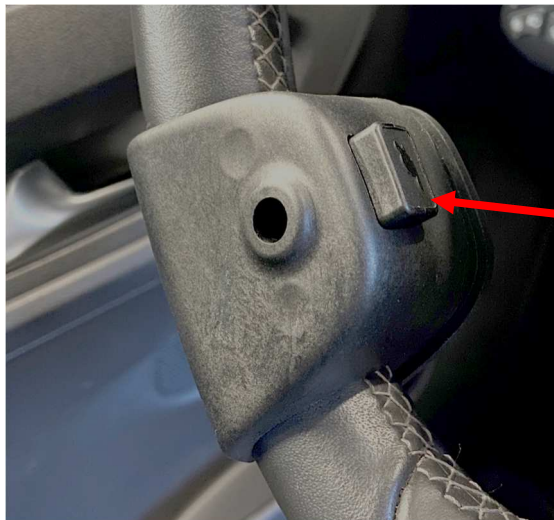
Always check if SmartSteer is locked in the clamp by carefully pulling SmartSteer away from the steering wheel.

Check if SmartSteer can rotate 360 degrees without running into obstacles. In some vehicles the spacer is required to make this possible.

Attention: When the spacer is required but not mounted, it may lead to accidents resulting in serious injury or death.

To remove SmartSteer press button A and pull SmartSteer out of the clamp.

Other drivers of the vehicle should always remove SmartSteer for safety reasons.



Button A

4. Maintenance

Before every drive, SmartSteer and the steering wheel clamp must be inspected visually for irregular wear or damage. Also check if SmartSteer can rotate without friction. Report all issues to your installer so they can be repaired.

Attention: A SmartSteer that doesn't function properly can lead to accidents that may lead to serious injury or death!

When the battery level is almost low, this will be indicated by red illumination under the turn signal buttons. When a button is pressed, the illumination will light up. The battery has to be replaced. The average battery life is two years. The battery type is: **9 volt 6RL61**.

Red illumination when battery is low



Front wipers and washer:

The button for 'Front wiper' can be used to operate up to three functions. They are 'Short wiping', 'Increase wiper speed' and 'Washer'.

Operation is as follows:

While the wipers are off:

- Press the button for 'Front wiper' shorter than 0,4 seconds. The function 'Short wiping' is activated. The wipers make a single wipe and are deactivated.
- Press the button for 'Front wiper' longer than 0,4 seconds, but shorter than 1 second. The wiper speed is increased. That means to say, when the wipers are off, they will now turn to interval.

While 'Interval', 'low speed' or 'high speed' is activated:

- Press the button for 'Front wipers' shorter than 1 second. The wiper speed is increased. That means to say: from 'Interval' to 'low speed', from 'low speed' to 'high speed' and from 'high speed' to 'Off'.

Regardless of the wiper speed:

- Press and hold the button for 'Front wiper' for longer than 1 second. After 1 second, the washer is activated. The washer remains active for as long as the button remains pressed. The wipers make a few wipes before returning to the wiper speed they were in before activating the washer.

The installer has made the checked alterations to the configuration in your vehicle:

- The function 'Short wiping' is not available. A shorter press than 0,4 seconds will also increase the wiper speed.

3. Operating secondary functions

SmartSteer has buttons for turn signals, lighting, horn and wipers.



SmartSteer is equipped with illuminated buttons. The symbols will light up when the blanc oval button is pressed. After 10 seconds the illumination will slowly dim.

By default, SmartSteer has been configured as described here:

Horn:

The horn is activated for as long as the button is pressed. After 10 seconds of uninterrupted operation, the horn will be deactivated.

Turn signals:

The turn signal buttons can be used to operate up to three functions. These are 'Turn signals', 'Hazard flasher' and 'Lane change'. The 'Lane change' function will activate the turn signals for a few flashes before switching off automatically.

Operation is as follows:

- Press the button for turn signal left or right shorter than 0.4 seconds. The function 'Lane change' is activated. After three flashes the turn signals are deactivated.
- Press the button for turn signal left or right longer than 0.4 seconds. The turn signal is activated. It's deactivated when the same button is pressed again, when the automatic cancellation is activated or when the opposite turn signal button is pressed. In the latter case, the opposite turn signal will be immediately activated.

The installer has made the checked alterations to the configuration in your vehicle:

- The 'Lane change' function is not available. A press shorter than 0.4 seconds activates the turn signals.
- The 'Hazard flasher' function is not available.
Operation is as follows:
 - Press the button for turn signals left or right longer than 1.5 seconds. The hazard flasher is activated. A short press on one of the turn signal buttons deactivates the hazard flasher.
- The turn signals switch off after making a turn, similar to OEM turn signals. The system reacts to the steering angle.
- The turn signals automatically switch off after a pre-set time. The default time is 7 seconds. When the brakes are applied, the turn signals remain active. After releasing the brakes, the entire pre-set time has to expire before the turn signals are deactivated.
- The turn signals don't switch off automatically. It's impossible to read the steering angle or status of the brakes in some vehicles.

Lighting:

The button for 'Low beam' can be used to operate up to three functions. They are 'Low beam', 'Flash to pass' and 'High beam'.

Operation is as follows:

- Press the button for 'Low beam'. The low beam is activated.
- Press the button for 'Low beam' again but shorter than 2 seconds. The high beam is activated. Press the button for 'Low beam' again to deactivate the high beam.
- Press and hold the button for 'Low beam' for longer than 2 seconds. The low beam is deactivated.

The installer has made the checked alterations to the configuration in your vehicle:

- Low beam activates automatically, seconds after turning on the ignition. Operation is as described, only activating the low beam is done automatically. Deactivating the low beam can be done in the usual way.
- The functions 'Low beam', 'Flash to pass' and 'High beam' are combined under the button 'Low beam'.
Operation is as follows:
 - Press the button for 'Low beam' shorter than 1 second. Flash to pass is activated for 1 second.
 - Press the button for 'Low beam' longer than 1 second. The low beam is activated.
 - Press the button for 'Low beam' shorter than 2 seconds. The high beam is activated. Press the button for 'Low beam' again shorter than 2 seconds to deactivate the high beam.
 - Press and hold the button for 'Low beam' longer than 2 seconds. The low beam is deactivated.